

Technical Data Sheet



Catalog No. K2XGF24-0.25

Characteristics

Phase	1
KVA	0.25
Primary	240X480V
Secondary	24/48V
Conductor	Copper
Temp. Rise	115° C
Frequency	60 HZ
Taps	None
ESS	No
Insulation	180° C
Weathershield	N/A
Wall Bracket	Built-In
Weight(lbs)	15
Sound(dB)	40

Notes

All units are UL listed and are designed in accordance with applicable NEMA, ANSI and IEEE standards.

Transformers are dry-type AA, non-ventilated NEMA 3R enclosure.

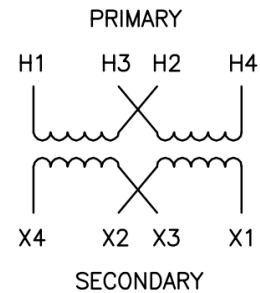
Transformers are wall mounted. Wall mounting bracket is built into the enclosure.

Paint color is ANSI 61.

AMP Ratings

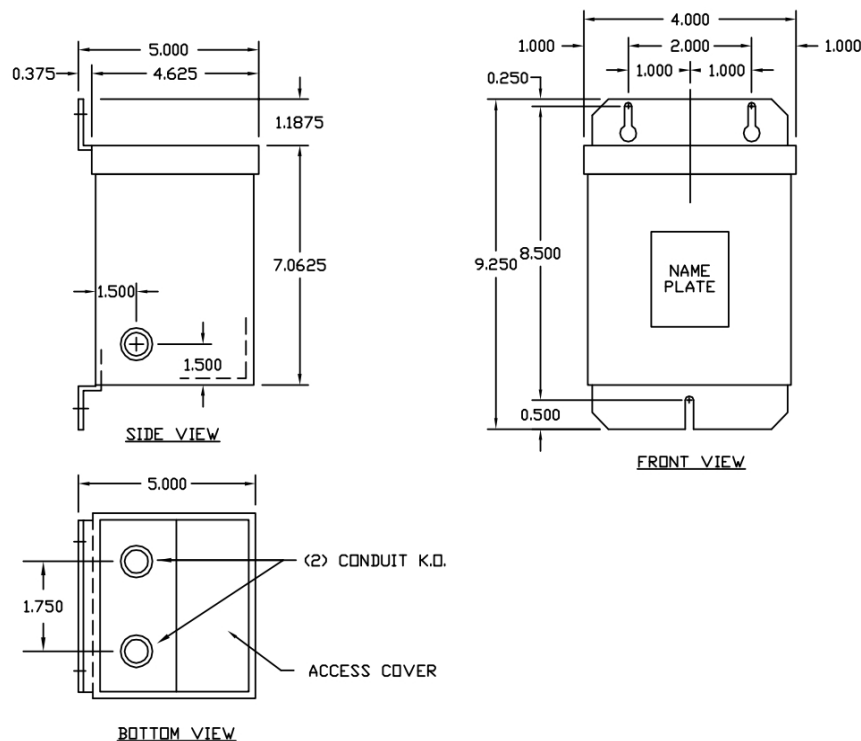
Line In (Load) @ 240V	1.0A
Line In (Load) @ 480V	0.5A
Load (Secondary) @ 24V	10.4A
Load (Secondary) @ 48V	5.2A

Winding Diagram - 10C



VOLTS	CONNECTIONS	LINE LEADS
240	H2-H3	H1, H4
120	H1-H3, H2-H4	H1, H4
48	X2 - X3	X1, X4
24	X1-X3, X2-X4	X1, X4

When used as an isolation transformer



Outline No: 05A1462